



INDUSTRIAL 240 LIFT

INSTRUCTIONS • PARTS DRAWING • PARTS LIST

WARNING: READ INSTRUCTIONS BEFORE OPERATING

1. This is for operation on a 115, 60 Hz circuit only.
2. Do not remove ground prong from plug.
3. Center load on table 700 lb. maximum.
4. Keep hands and tools from under carriage.
5. Do not mount table when in elevated position.



HANDY JADEIM LIMITED WARRANTY

Handy Industries Division of Jadeim, LLC, warrants to the original purchaser of this product, all parts to be free from defects in manufacture for a period of one (1) year from date of delivery. Notice of a defective part must be received in writing at Handy Industries within one (1) year of purchase. All defective parts must be returned to Handy Industries and which, upon our examination any parts which are defective in manufacture or workmanship, will be replaced or put in good operating condition. This warranty does not apply to damage resulting from accident, improper installation, repair, operation or maintenance, negligence or neglect. THE COST OF SUCH REPLACEMENT OR REPAIR SHALL BE EXCLUSIVE REMEDY FOR ANY BREACH OF ANY WARRANTY AND HANDY INDUSTRIES SHALL NOT BE LIABLE TO ANY PERSON FOR CONSEQUENTIAL DAMAGE, OR INJURY, OR COMMERCIAL LOSS RESULTING FROM ANY BREACH OF WARRANTY. HANDY INDUSTRIES MAKES NO WARRANTY OR MERCHANTABILITY, MAKES NO WARRANTY OF FITNESS FOR A PARTICULAR PURPOSE AND MAKES NO OTHER WARRANTY EXPRESSED OR IMPLIED, INCLUDING IMPLIED WARRANTY ARISING FROM THE COURSE OR DEALING OR USAGE OF THE TRADE.

INCLUDING IMPLIED WARRANTY ARISING FROM THE COURSE OR DEALING OR USAGE OF THE TRADE.

HANDY DIVISION OF JADEIM L.L.C.

401 South 2nd Ave. Marshalltown, IA 50158 855-752-5446 Fax 641-752-1205 www.handyindustries.com



INDUSTRIAL 240 LIFT

INSTRUCTIONS



NOTE: READ ENTIRE MANUAL TO COMPLY WITH ALL SAFETY AND SERVICE PRECAUTIONS. DEATH, PERSONAL INJURY AND/OR PROPERTY DAMAGE MAY OCCUR UNLESS INSTRUCTIONS ARE FOLLOWED CAREFULLY.

POWER SUPPLY

This lift is for operation on 115 volt, 60 Hz only. Check outlet voltage before plugging in the equipment.



WARNING: This lift is equipped with a 3-prong plug which must be plugged into a grounded 115 volt, 60 hz power supply for your safety. Removing ground prong from plug or failure to plug into a grounded receptacle may result in a fatal electrical shock.

UNPACKING AND SET-UP

1. Open carton and remove the shipping boards.
2. Keeping hands free of lift mechanisms to avoid personal injury - CAREFULLY turn lift over.
3. Plug power cord into 115 volt power supply.

OPERATION - LUBRICATION

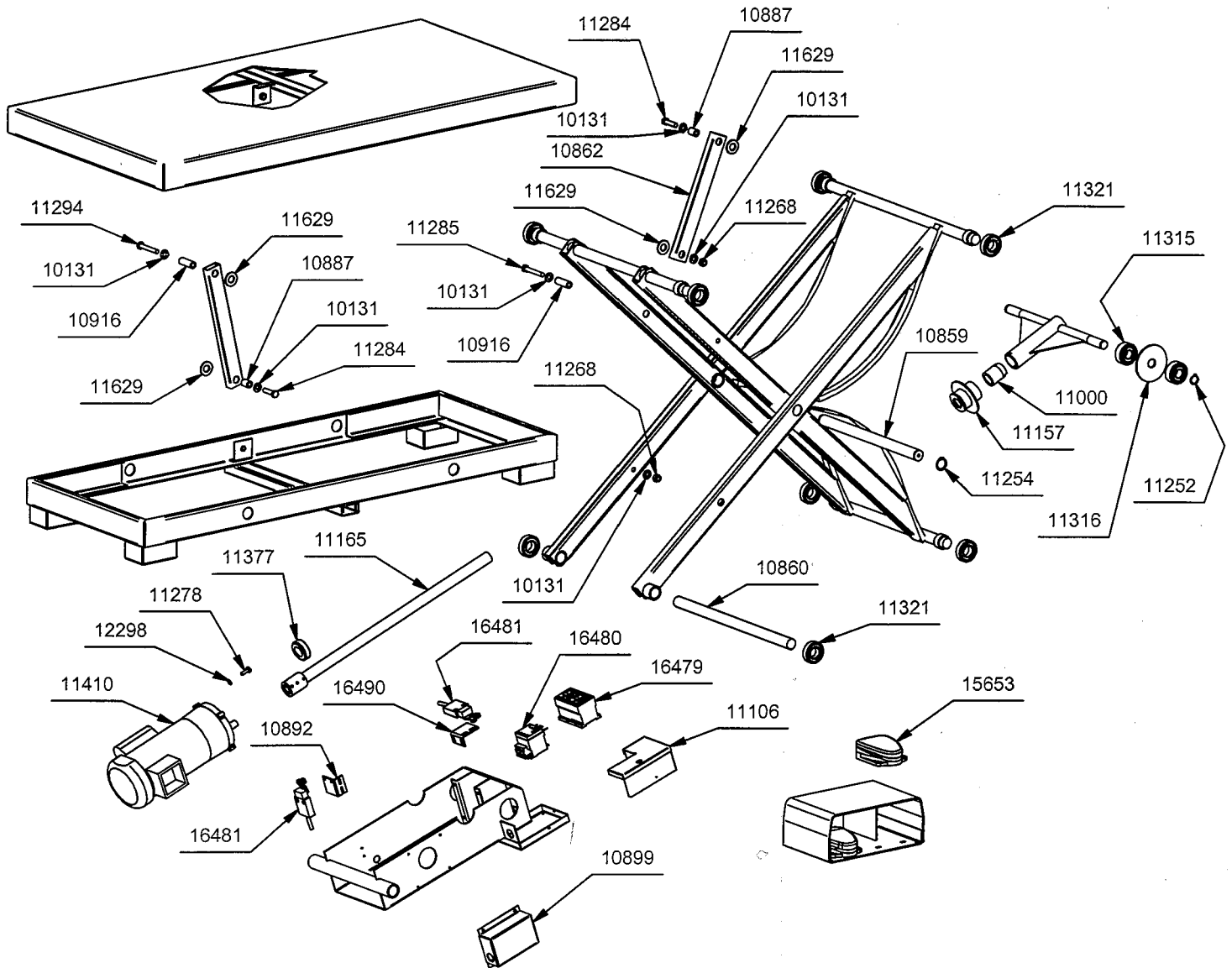
1. Loads must be centered and firmly positioned on the table at all times.
2. The drive screw and all moving parts have been lubricated at the factory and should be re-lubricated every 500 cycles. A light coating of grease should be applied to the drive screw to prevent galling. Grease zerks are located at each end of frame pivot shaft.
3. The motor and gear box were factory lubricated.

INSTALLING

The drive train components have been burnished in to give a tight, well working fit and will be stiff for the first few cycles. If drive screw should seize, put a few drops of oil on screw and cycle a few times. If motor should pull down or hum, **TURN OFF IMMEDIATELY**. Check to see if drive screw is free. Check for a loose connection on all terminals. A loose connection will cause motor to hum and not run.

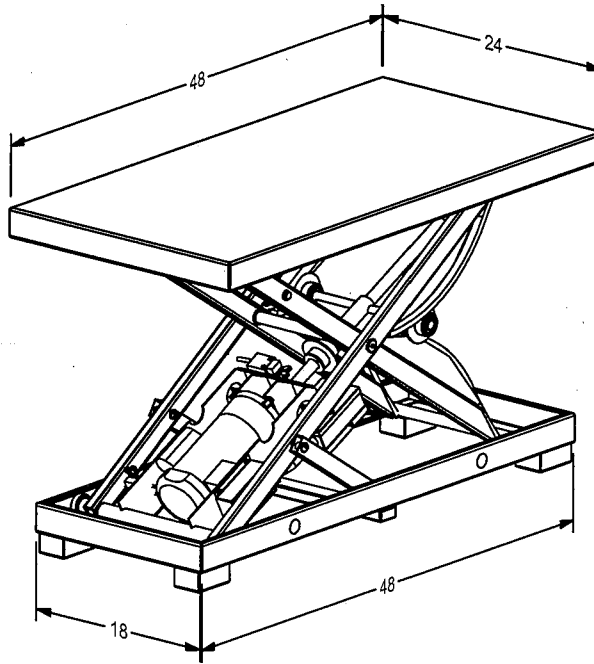


INDUSTRIAL 240 LIFT

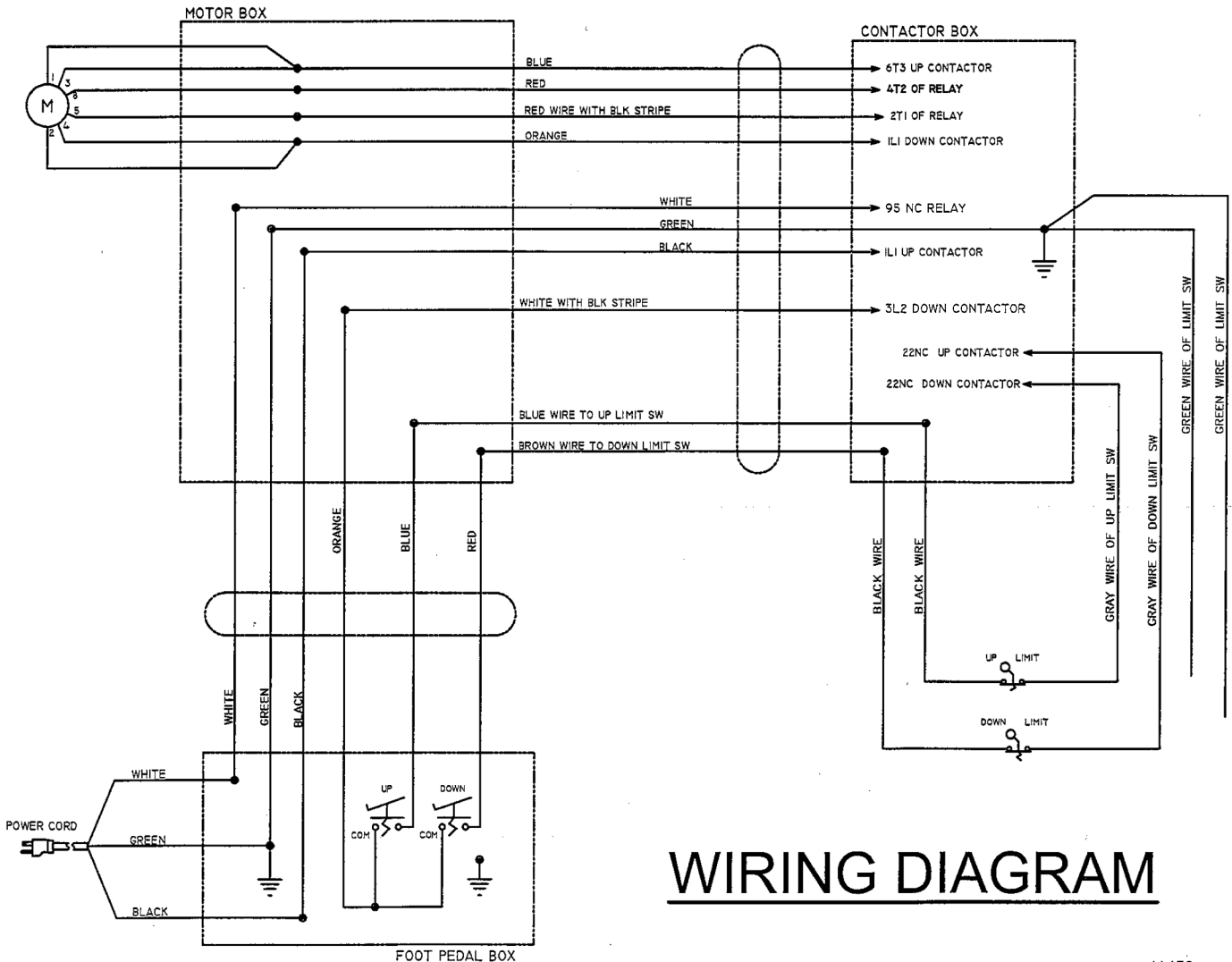


PART No.	DESCRIPTION	QTY/UNIT
10131	WASHER FLAT STD 3/8	12
10859	SHAFT FRAME PIVOT	1
10860	SHAFT ROLLER 17 7/16	1
10862	IDLER ARM PIVOT PTD R	4
10887	TUBE SPACER	4
10892	BRACKET LOWER LIMIT PTD CHAR BLK	1
10899	BOX JUNCTION PTD R	1
10916	TUBE SPACER	4
11000	NUT ACME	1
11106	ELECTRIC MODULE COVER PTD R	1
11157	ASSY NUT COUPLING	1
11165	SCREW ACME	1
11252	RING RETAINING CAM BEARING	2
11254	RING RETAINING 1	2
11268	NUT 3/8-16 HEX NYLON	4
11278	SCREW 1/4-28D 3/4HHCS PLTD	4

PART No.	DESCRIPTION	QTY/UNIT
11284	SCREW 3/8-16 X 1 1/2 HHCS	4
11285	SCREW 3/8-16 X 2 1/2 HHCS PLTD	2
11294	SCREW 3/8-16 X 2 1/2 RH SLOT PLTD	2
11315	BEARING CAM ROLLER 5304-2RS	4
11316	SPACER CAM BRG 13/16X1/8X3 1/2 F/W	2
11321	BEARING TRACK ROLLER 1641-2RS	8
11377	BEARING THRUST D9	1
11410	MOTOR 1/3HP 172RPM 33E739W126K1	1
11629	WASHER 3 5/8 PLATED	8
12298	LOCKWASHER 1/4 INTERNAL TOOTH	4
15653	SWITCH FOOT CONTROL 632-S	2
16479	CONTACTOR LC2 K0601F7	1
16480	RELAY LR2K0314	1
16481	LIMIT SWITCH	2
16490	BRACKET UPPER LIMIT PTD CHAR BLK	1



INDUSTRIAL 240 LIFT SPECIFICATIONS								
Cap.	Platform Size	End Load	Side Load	Raised Height	Lowered Height	Speed Up	Motor	Weight
700 lbs.	24 X 48	700 lbs.	700 lbs.	37 1/2"	7 1/2"	27 sec.	1/3 hp.	218 lbs.



WIRING DIAGRAM

INDUSTRIAL 240 LIFT CONTROL SYSTEM

