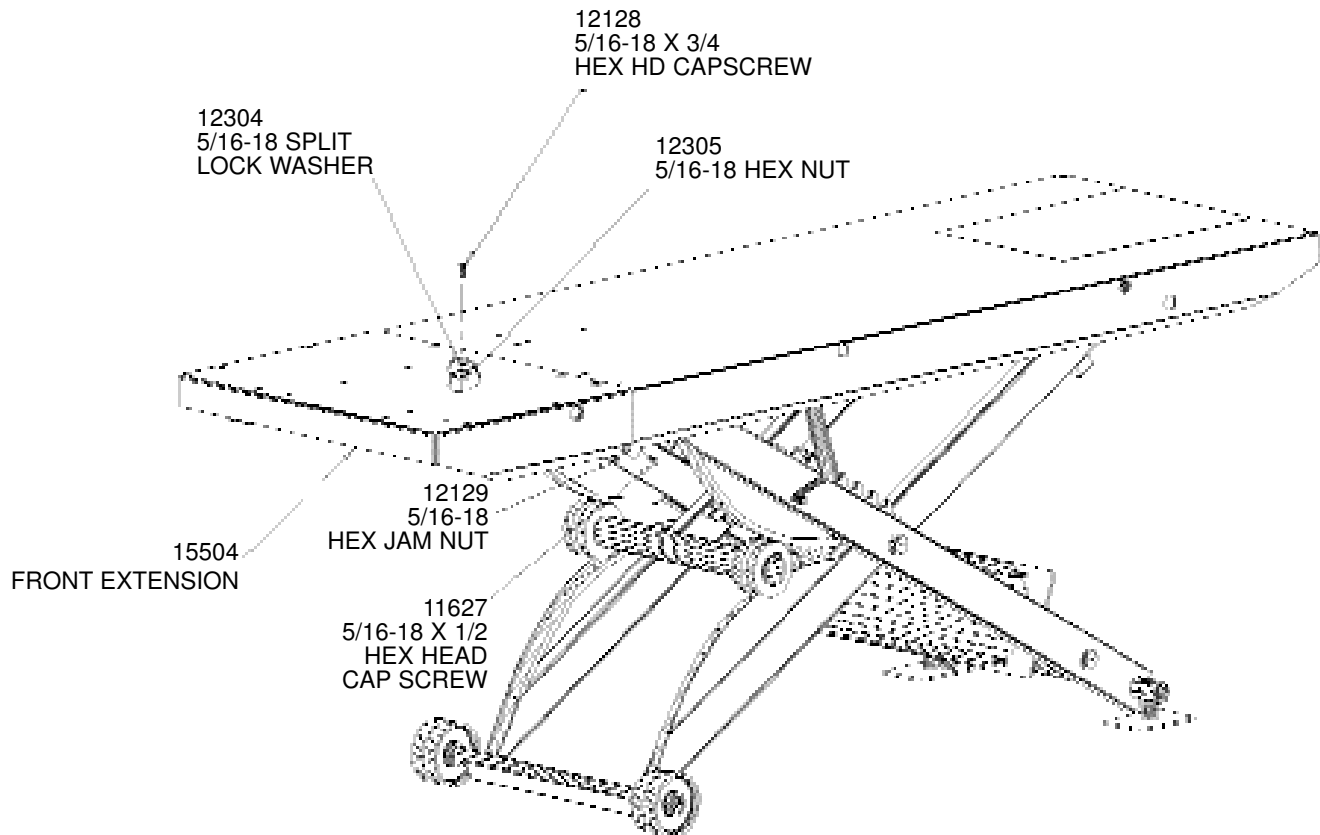


B.O.B. 1500 AIR LIFT 13" FRONT EXTENSION MOUNTING INSTRUCTIONS



POSITION THE 13" FRONT EXTENSION OVER THE EXISTING TABLE AS SHOWN AND ATTACH WITH SIX 5/16 X 3/4 SCREWS, NUTS AND LOCKWASHERS PROVIDED.

NOTE: ALL ACCESSORIES MUST BE REMOVED BEFORE INSTALLING EXTENSION.



HANDY INDUSTRIES DIVISION OF JADEIM, LLC

401 South 2nd. Ave. Marshalltown, IA 50158
Ph 855-752-5446 Fax 641-752-1205 www.handyindustries.com