

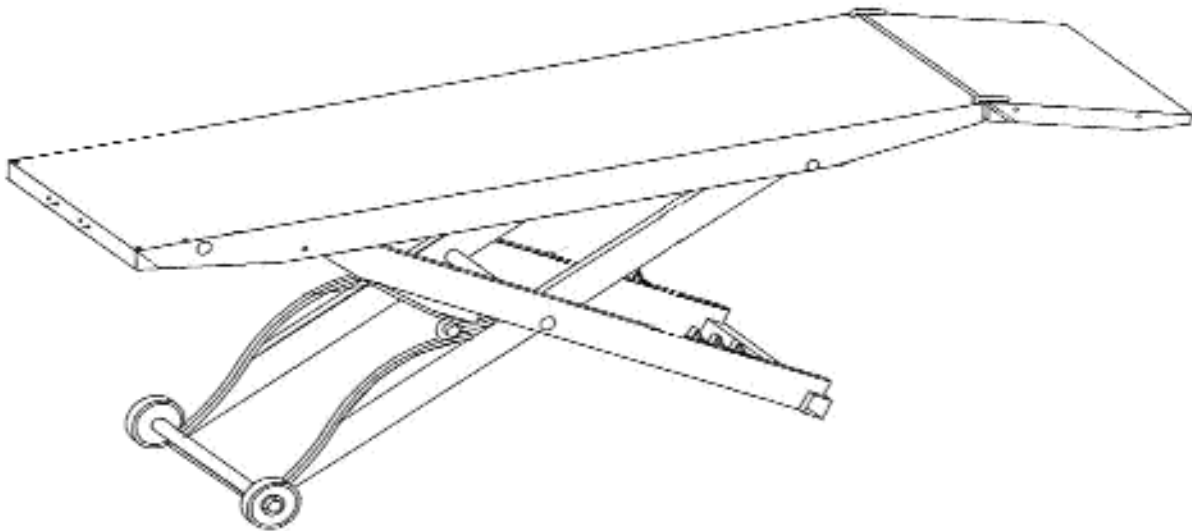


# **STANDARD ELECTRIC LIFT** **WITH PUSHBUTTON CONTROL**

● **INSTRUCTIONS**   ● **PARTS DRAWING**   ● **PARTS LIST**

**P/N 10742**

**WARNING: READ INSTRUCTIONS BEFORE OPERATING**



1. This is for the operation on a 115 volt, 60 Hz. circuit only.
2. Do not remove ground prong from plug.
3. Center load on table - 1000 lb. maximum.
4. Keep hands and tools from under carriage.
5. Do not mount table when in elevated position.
6. Do not ride vehicle onto lift.
7. Lift must be in the lowered position when moving.
8. Only trained persons should operate Electric Lift.
9. The working area should be sufficiently lit.
10. Recommended for indoor use only.

# STANDARD ELECTRIC LIFT



**NOTE: THIS SYMBOL MEANS WARNING OR CAUTION: DEATH, PERSONAL INJURY AND/OR PROPERTY DAMAGE MAY OCCUR UNLESS INSTRUCTIONS ARE FOLLOWED CAREFULLY. READ ENTIRE MANUAL TO COMPLY WITH ALL SAFETY AND SERVICE PRECAUTIONS.**



## POWER SUPPLY

This lift is for operation on 115 volt, 60 Hz current only. Check outlet voltage before plugging in equipment. **WARNING:** This lift is equipped with a 3-prong plug which must be plugged into a grounded 115 volt, 60 Hz power supply for your safety. Removing ground prong from plug or failure to plug into a grounded receptacle may result in a fatal electric shock.

## UNPACKING AND SET-UP

1. Open carton, then remove ramp and shipping boards.
2. Keeping hands free of lift mechanisms to avoid personal injury-CAREFULLY turn left over.
3. Insert ramp mounting pins into holes at either end of table to mount ramp. **NOTE:** If cycle vise is being installed, ramp must be mounted opposite the cycle vise.

## OPERATION-LUBRICATION

1. Loads must be centered on table at all times.
2. Loads must be firmly positioned on table at all times.
3. All moving parts have been lubricated at the factory and should be re-lubricated occasionally to prevent galling. Grease zerks are located at each end of frame pivot shaft and at top ends of inside frame assembly.
4. The drive screw, motor and gear box were factory lubricated, and this lubrication should last for the life of the lift. Should re-lubrication be necessary, use a No. 9 multi-purpose gear oil in gear box and an "O" grade gear grease on drive screw.
5. Frame/motor pivot shaft set screws should be checked frequently to be sure they are tight. These are located at the top of the inside frame.

## INSTALLING

The drive train components have been burnished in to give a tight, well working fit and will be stiff for the first few cycles. If drive screw should seize, put a few drops of oil on screw and reverse a few times. If motor should pull down or hum, **TURN OFF IMMEDIATELY.** Check to see if drive screw is free.

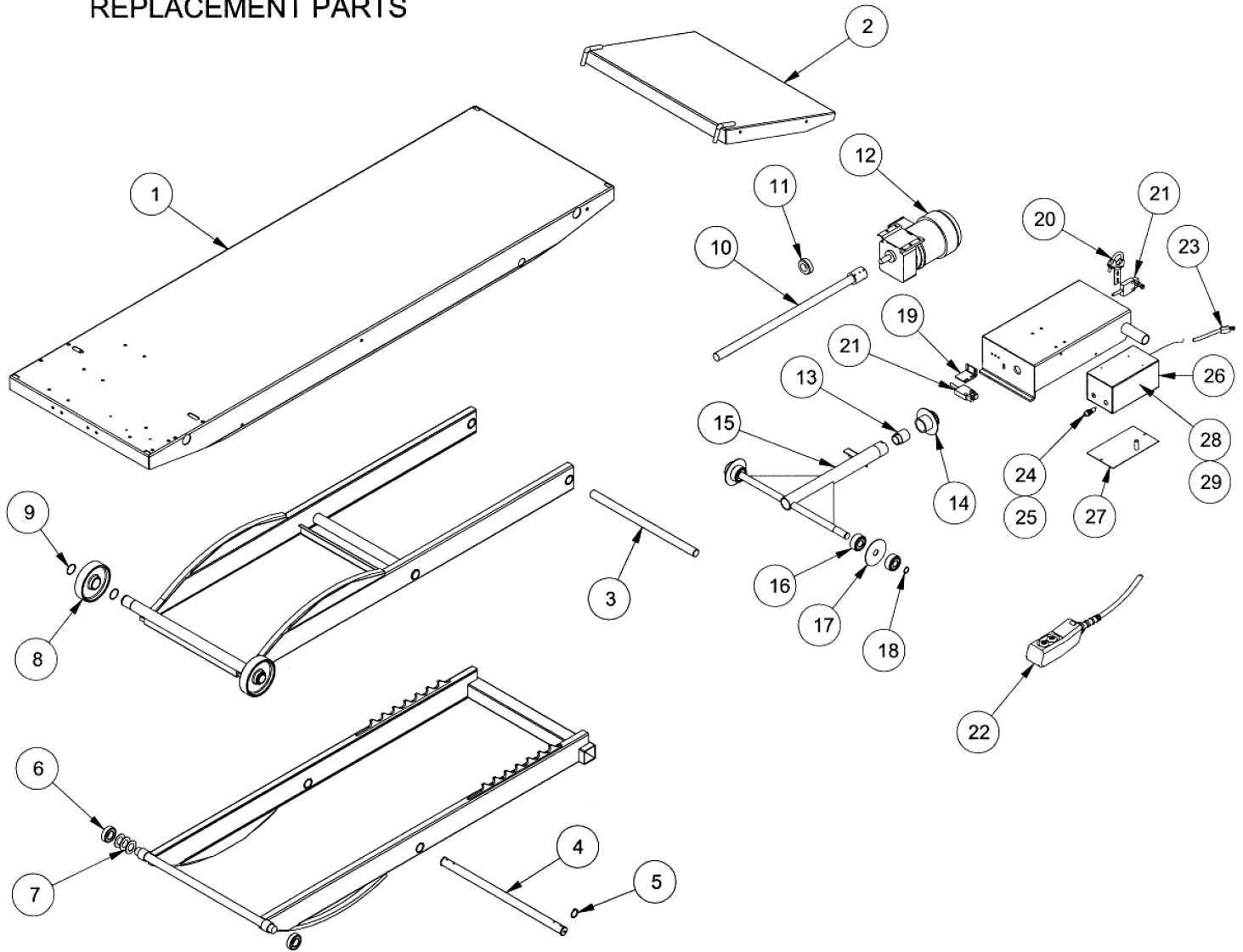
## **Other Options Available**

Separate installation instructions included with each option

PART #	DESCRIPTION
14476	CV-17 CYCLE VISE - Vise with removable wheel stop built into vise
10730	8" SIDE EXTENSIONS (2) - Expands width of lift from 24" to 40"
10728	12" SIDE EXTENSIONS (2) - Expands width of lift from 24" to 48" includes stabilizer bar
16011	13" FRONT EXTENSIONS - Extends lift top to 93" for longer wheel base motorcycles
15566	RAMP END EXTENSION - Attaches to end of lift ramp for a more gradual incline to prevent bigger bikes from dragging bottom.
10737	SNOWMOBILE WING KIT - Used when lifting snowmobiles
16355	CE FOOT PEDAL - Covered foot pedal
10732	LIFT DOLLY - Helps move lift while in down position
15833	RED HANDY TIE-DOWNS - 1 pair - Secure your equipment on our lift with 1" x 6' straps
16010	TOOL TRAY - Keeps tools organized and Handy

# STANDARD ELECTRIC LIFT

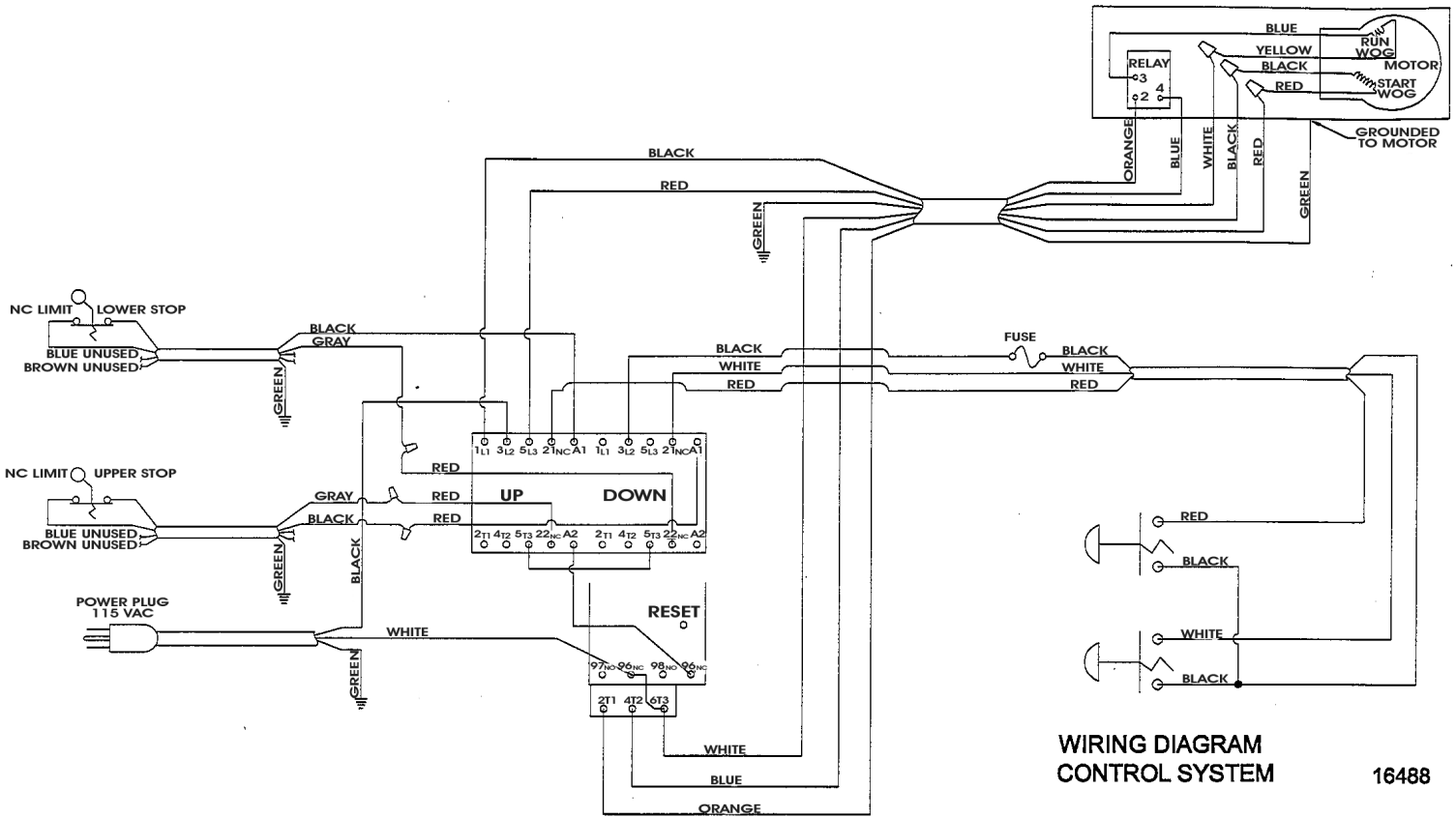
## REPLACEMENT PARTS



ITEM	PART No.	DESCRIPTION	QTY
1	11052	ASSY TOP PTD GRAY	1
2	11123	ASSY RAMP WELDED PTD GRAY	1
3	11008	SHAFT PIVOT	1
4	11179	ASSY FRAME PIVOT SHAFT REPLACEMENT	1
5	11254	RING RETAINING 1	2
6	11321	BEARING TRACK ROLLER 1641-2RS	2
7	11263	WASHER 1 3/4 X 1 1/32ID MACH	3
8	14737	WHEEL CAST PTD CHARCOAL BLACK	2
9	11253	RING RETAINING WHEEL 1 5/16 SPIRAL	4
10	11165	SCREW ACME	1
11	11377	BEARING THRUST D9	1
12	11323	MOTOR GEAR	1
13	11000	NUT ACME	1
14	11157	ASSY NUT COUPLING WITH LM SW WASHER	1
15	11169	ASSY CAM SHAFT	1

ITEM	PART No.	DESCRIPTION	QTY
16	11315	BEARING CAM ROLLER 5304-2RS	4
17	11316	SPACER CAM BRG 13/16X 1/8X 3 1/2F/W	1
18	11252	RING RETAINING CAM BEARING	2
19	16490	BRACKET UPPER LIMIT	1
20	16876	BRACKET LOWER LIMIT	1
21	16481	LIMIT SWITCH WITH CORD	2
22	20585	CONTROL PENDENT ELECTRIC	1
23	12339	CORD POWER 14/3 STO 105DEG 6FT	1
24	16482	PANEL MOUNT FUSEHOLDER	1
25	16483	TIME DELAY FUSE	1
26	16885	CONTROL BOX ASSY	1
27	16880	CONTROL BOX LID ASSY	1
28	16479	CONTACTOR (INSIDE CONTROL BOX)	1
29	16480	RELAY (INSIDE CONTROL BOX)	1

# STANDARD ELECTRIC LIFT



WIRING DIAGRAM  
CONTROL SYSTEM

16488

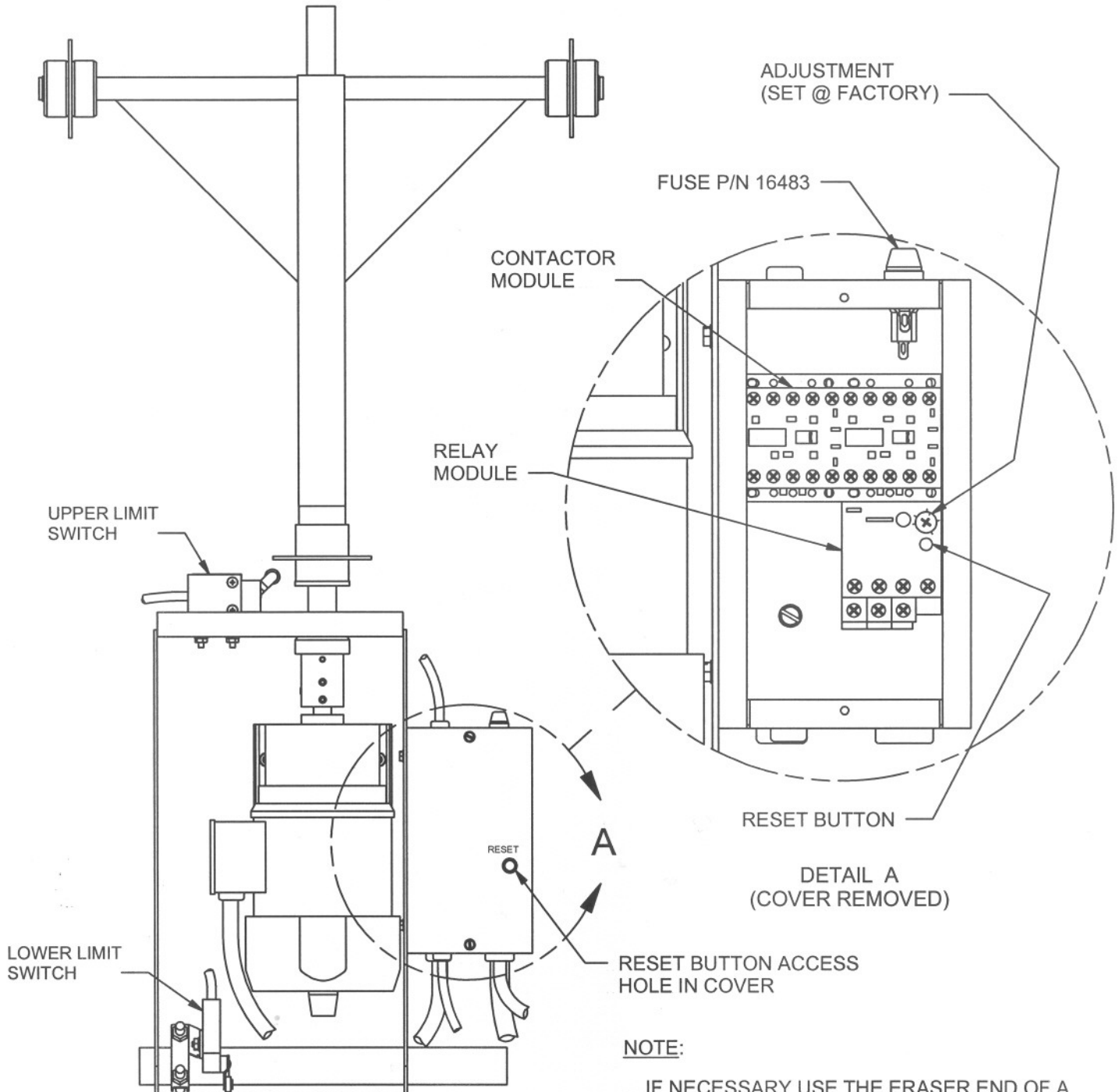
## HANDY LIMITED WARRANTY

Handy Industries Division of Jadeim LLC, warrants to the original purchaser of this product, all parts to be free from defects in manufacture for a period of one (1) year from date of delivery. Notice of a defective part must be received in writing at Handy Industries within one (1) year of purchase. All defective parts must be returned to Handy Industries and which, upon our examination any parts which are defective in manufacture or workmanship, will be replaced or put in good operating condition. This warranty does not apply to damage resulting from accident, improper installation, repair, operation or maintenance, negligence or neglect. THE COST OF SUCH REPLACEMENT OR REPAIR SHALL BE EXCLUSIVE REMEDY FOR ANY BREACH OF ANY WARRANTY AND HANDY INDUSTRIES SHALL NOT BE LIABLE TO ANY PERSON FOR CONSEQUENTIAL DAMAGE, OR INJURY, OR COMMERCIAL LOSS RESULTING FROM ANY BREACH OF WARRANTY. HANDY INDUSTRIES MAKES NO WARRANTY OR MERCHANTABILITY, MAKES NO WARRANTY OF FITNESS FOR A PARTICULAR PURPOSE AND MAKES NO OTHER WARRANTY EXPRESSED OR IMPLIED, INCLUDING IMPLIED WARRANTY ARISING FROM THE COURSE OR DEALING OR USAGE OF THE TRADE.



# ELECTRIC LIFT

## CONTROL SYSTEM



**NOTE:**

IF NECESSARY USE THE ERASER END OF A COMMON WOODEN PENCIL TO PUSH DOWN ON THE RESET BUTTON