

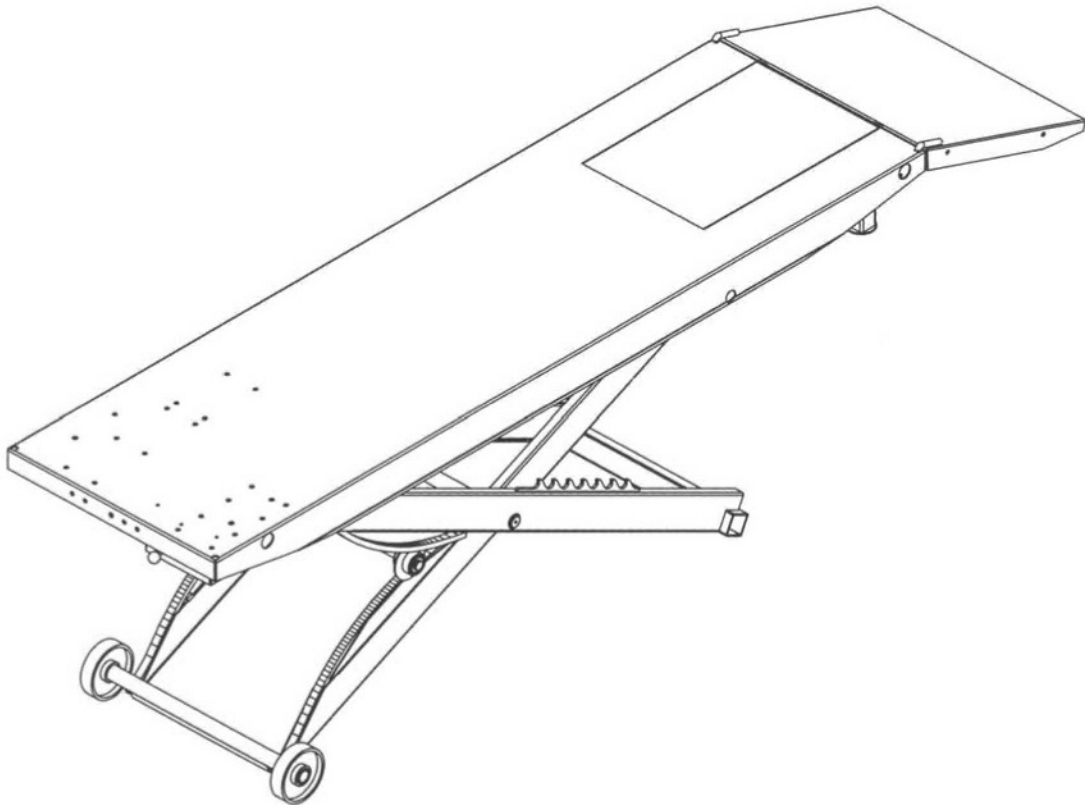


# S.A.M 1000 ELECTRIC LIFT

**INSTRUCTIONS • PARTS DRAWING • PARTS LIST**

**P/N 16007**

**WARNING: READ INSTRUCTIONS BEFORE OPERATING**



1. This is for operation on a 115 volt, 60 Hz. circuit only.
2. Do not remove ground prong from plug.
3. Center load on table-1000 lb. maximum.
4. Keep hands and tools from under carriage.
5. Do not mount table when in elevated position.
6. Do not ride vehicle onto lift.
7. Lift must be in the lowered position when moving.
8. Only trained persons should operate Electric Lift.
9. The working area should be sufficiently lit.
10. Recommended for indoor use only.

**HANDY INDUSTRIES DIVISION OF JADEIM, LLC**

401 South 2nd Ave. Marshalltown, Iowa 50158 - Ph. 1-800-247-7594 - [www.handyindustries.com](http://www.handyindustries.com)



# S.A.M 1000 ELECTRIC LIFT

## INSTRUCTIONS



**NOTE: THIS SYMBOL MEANS WARNING OR CAUTION: DEATH, PERSONAL INJURY AND/OR PROPERTY DAMAGE MAY OCCUR UNLESS INSTRUCTIONS ARE FOLLOWED CAREFULLY. READ ENTIRE MANUAL TO COMPLY WITH ALL SAFETY AND SERVICE PRECAUTIONS.**

### POWER SUPPLY



This lift is for operation on 115 volt, 60 Hz current only. Check outlet voltage before plugging in equipment.

**WARNING:** This lift is equipped with a 3-prong plug which must be plugged into a grounded 115 volt, 60 Hz power supply for your safety. Removing ground prong from plug or failure to plug into a grounded receptacle may result in a fatal electric shock.

### UNPACKING AND SET-UP

1. Open carton, then remove ramp and shipping boards.
2. **CAREFULLY TURN TABEL UPRIGHT INTO OPERATING POSTION BEFORE REMOVING SHIPPING CABLE RESTRAINT FROM SCISSOR MECHANISM.**
3. Insert ramp mounting pins into holes at either end of table to mount ramp. **NOTE:** If cycle vise is being installed, ramp must be mounted opposite the cycle vise.

### OPERATION-LUBRICATION

1. Loads must be centered on table at all times. Table is rated for a maximum load of 1000 lb.
2. Loads must be firmly positioned on table at all times.
3. All moving parts have been lubricated at the factory and should be re-lubricated occasionally to prevent galling. Grease zerks are located at each end of frame pivot shaft and at top ends of inside frame assembly.
4. The drive screw, motor and gear box were factory lubricated, and this lubrication should last for the life of the lift. Should re-lubrication be necessary, use a No. 9 multi-purpose gear oil in gear box and an "O" grade gear grease on drive screw.
5. Frame/motor pivot shaft set screws should be checked frequently to be sure they are tight. These are located at the top of the inside frame.

### INSTALLING

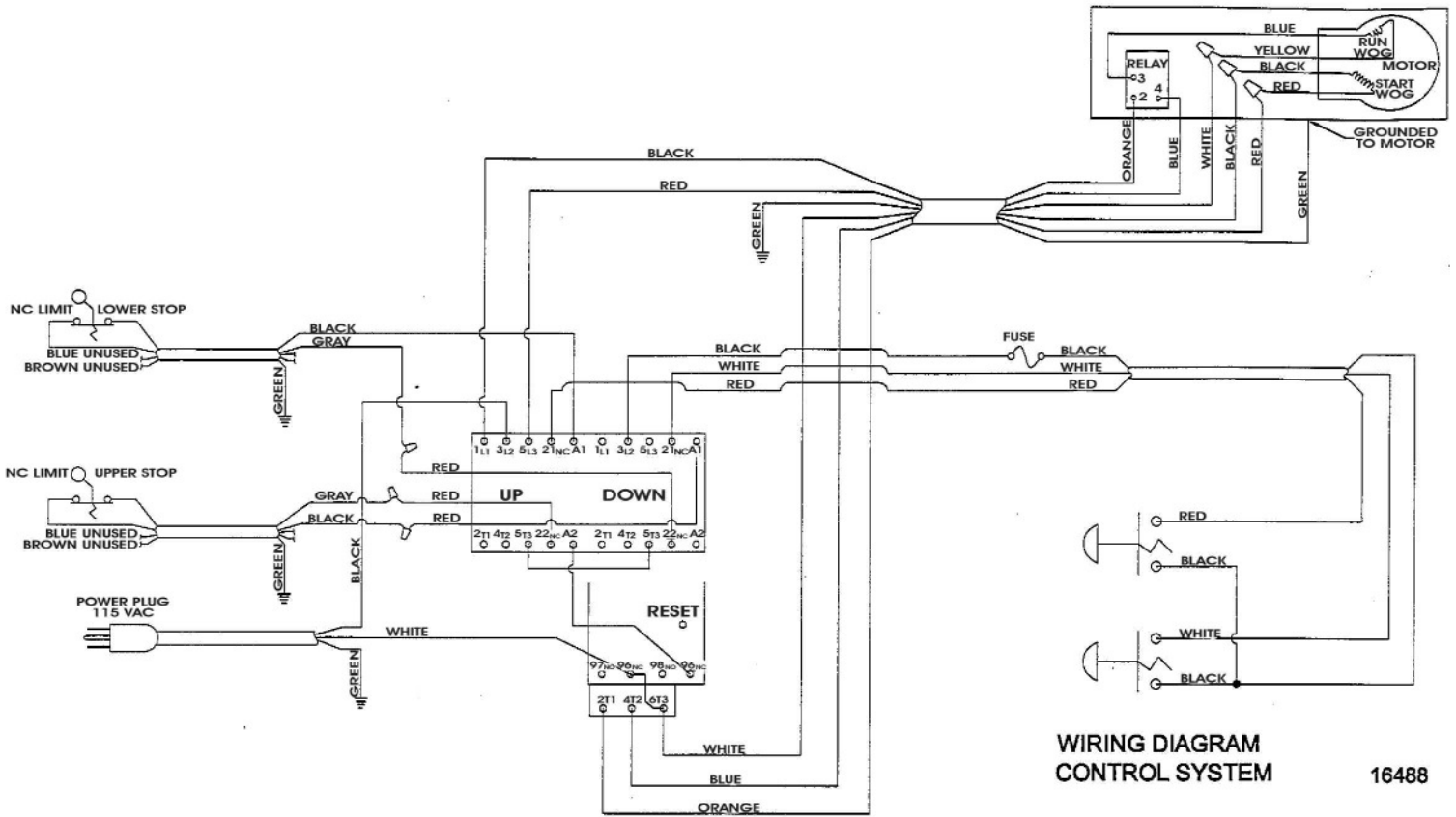
The drive train components have been burnished in to give a tight, well working fit and will be stiff for the first few cycles. If drive screw should seize, put a few drops of oil on screw and reverse a few times. If motor should pull down or hum, **TURN OFF IMMEDIATELY**. Check to see if drive screw is free.

### OTHER OPTIONS AVAILABLE

ITEM #	DESCRIPTION
14476	CV-17 CYCLE VISE - Used to stabilize motorcycles while on lift
16001	13" FRONT EXTENSION - Extends lift top to for longer wheel base motorcycles.
16003	8" SIDE EXTENSION (2) - Expands width of lift from 24" to 40"
16002	12" SIDE EXTENSION (2) - Expands width of lift from 24" to 48" Includes stabilizer bar
10732	LIFT DOLLY - Helps move lift when in down position



# S.A.M. ELECTRIC LIFT

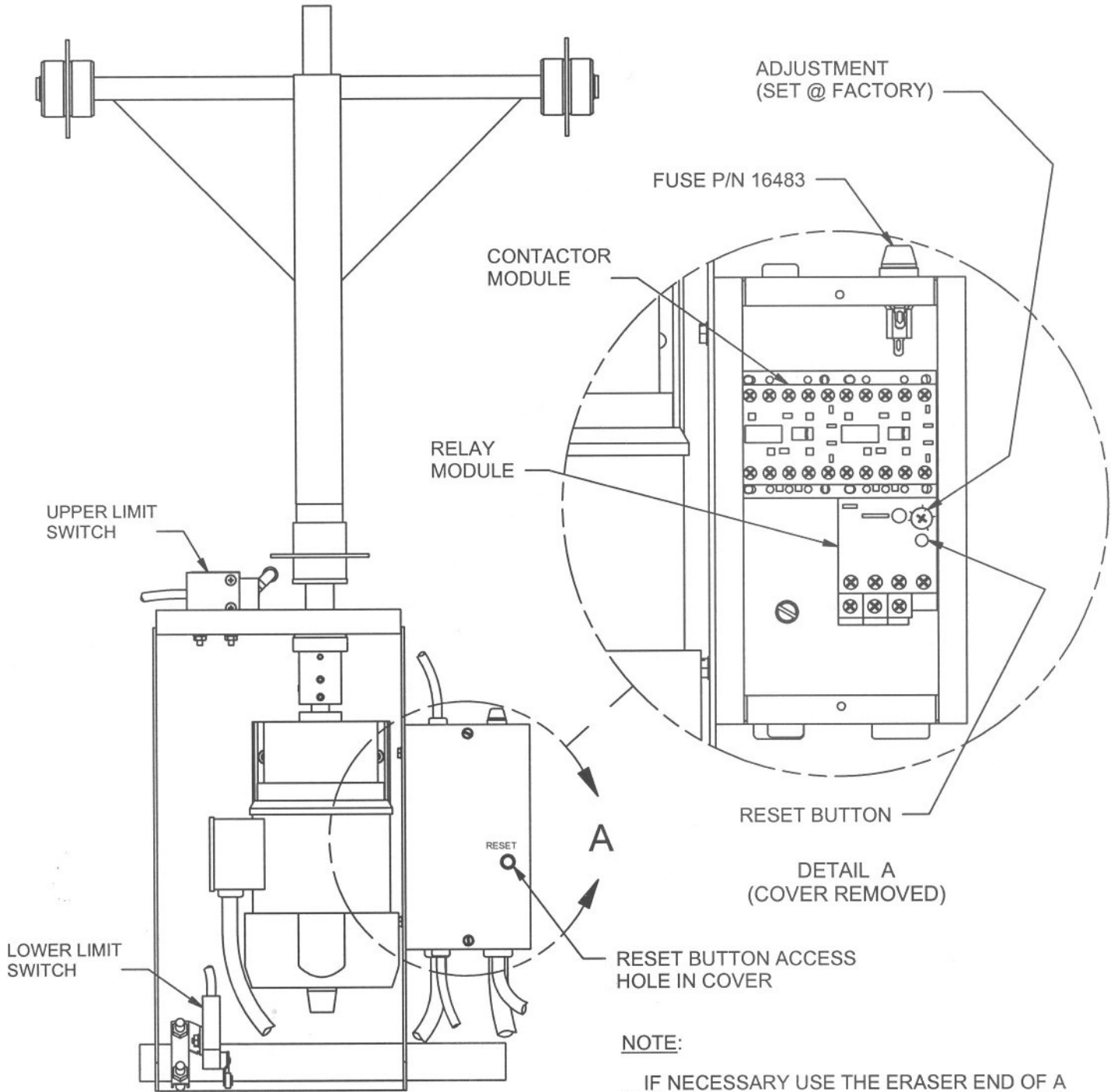


## HANDY LIMITED WARRANTY

Handy Industries Division of Jadeim LLC, warrants to the original purchaser of this product, all parts to be free from defects in manufacture for a period of one (1) year from date of delivery. Notice of a defective part must be received in writing at Handy Industries within one (1) year of purchase. All defective parts must be returned to Handy Industries and which, upon our examination any parts which are defective in manufacture or workmanship, will be replaced or put in good operating condition. This warranty does not apply to damage resulting from accident, improper installation, repair, operation or maintenance, negligence or neglect. THE COST OF SUCH REPLACEMENT OR REPAIR SHALL BE EXCLUSIVE REMEDY FOR ANY BREACH OF ANY WARRANTY AND HANDY INDUSTRIES SHALL NOT BE LIABLE TO ANY PERSON FOR CONSEQUENTIAL DAMAGE, OR INJURY, OR COMMERCIAL LOSS RESULTING FROM ANY BREACH OF WARRANTY. HANDY INDUSTRIES MAKES NO WARRANTY OR MERCHANTABILITY, MAKES NO WARRANTY OF FITNESS FOR A PARTICULAR PURPOSE AND MAKES NO OTHER WARRANTY EXPRESSED OR IMPLIED, INCLUDING IMPLIED WARRANTY ARISING FROM THE COURSE OR DEALING OR USAGE OF THE TRADE. INCLUDING IMPLIED WARRANTY ARISING FROM THE COURSE OR DEALING OR USAGE OF THE TRADE

# S.A.M. 1000 ELECTRIC LIFT

## CONTROL SYSTEM



NOTE:

IF NECESSARY USE THE ERASER END OF A COMMON WOODEN PENCIL TO PUSH DOWN ON THE RESET BUTTON